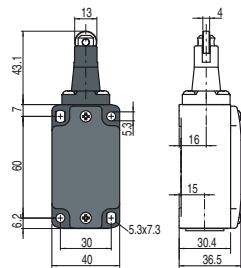




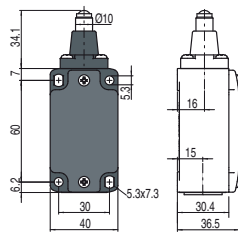
Contact type:

- R** = snap action
- L** = slow action
- LO** = slow action overlapped
- LS** = slow action shifted
- LV** = slow action shifted and spaced
- LI** = slow action independent
- LA** = slow action closer
- A** = electronic PNP

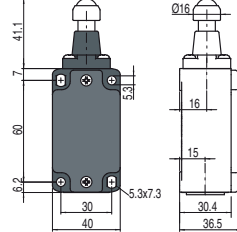
Contact blocks



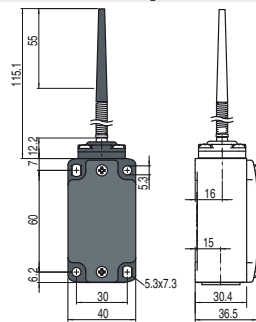
Ball, Ø 8 mm, stainless steel



Ball, Ø 12.7 mm, stainless steel

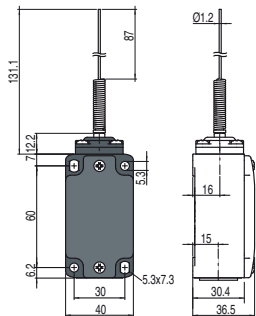


With external rubber gasket

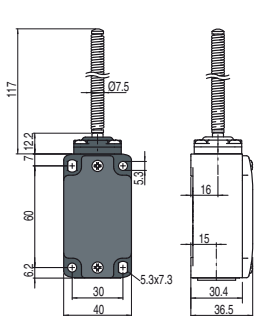


5	R	FD 516-M2	➔ 1NO+1NC	FD 518-M2	➔ 1NO+1NC	FD 519-M2	➔ 1NO+1NC	FD 520-M2	1NO+1NC
6	L	FD 616-M2	➔ 1NO+1NC	FD 618-M2	➔ 1NO+1NC	FD 619-M2	➔ 1NO+1NC		
7	LO	FD 716-M2	➔ 1NO+1NC	FD 718-M2	➔ 1NO+1NC	FD 719-M2	➔ 1NO+1NC		
9	L	FD 916-M2	➔ 2NC	FD 918-M2	➔ 2NC	FD 919-M2	➔ 2NC		
10	L	FD 1016-M2	2NO	FD 1018-M2	2NO	FD 1019-M2	2NO	FD 1020-M2	2NO
11	R	FD 1116-M2	➔ 2NC	FD 1118-M2	➔ 2NC	FD 1119-M2	➔ 2NC		
12	R	FD 1216-M2	2NO	FD 1218-M2	2NO	FD 1219-M2	2NO		
13	LV	FD 1316-M2	➔ 2NC	FD 1318-M2	➔ 2NC	FD 1319-M2	➔ 2NC		
14	LS	FD 1416-M2	➔ 2NC	FD 1418-M2	➔ 2NC	FD 1419-M2	➔ 2NC		
15	LS	FD 1516-M2	2NO	FD 1518-M2	2NO	FD 1519-M2	2NO		
18	LA	FD 1816-M2	➔ 1NO+1NC	FD 1818-M2	➔ 1NO+1NC	FD 1819-M2	➔ 1NO+1NC	FD 1820-M2	1NO+1NC
20	L	FD 2016-M2	➔ 1NO+2NC	FD 2018-M2	➔ 1NO+2NC	FD 2019-M2	➔ 1NO+2NC	FD 2020-M2	1NO+2NC
21	L	FD 2116-M2	➔ 3NC	FD 2118-M2	➔ 3NC	FD 2119-M2	➔ 3NC	FD 2120-M2	3NC
22	L	FD 2216-M2	➔ 2NO+1NC	FD 2218-M2	➔ 2NO+1NC	FD 2219-M2	➔ 2NO+1NC	FD 2220-M2	2NO+1NC
2	R	FD 216-M2	2x(1NO-1NC)	FD 218-M2	2x(1NO-1NC)	FD 219-M2	2x(1NO-1NC)	FD 220-M2	2x(1NO-1NC)
E1	A	FD E116-M2	1NO-1NC	FD E118-M2	1NO-1NC	FD E119-M2	1NO-1NC	FD E120-M2	1NO-1NC
Max. speed		page 237 - type 2		page 237 - type 4		page 237 - type 4		1 m/s	
Min. force		8 N (25 N ➔)		8 N (25 N ➔)		8 N (25 N ➔)		0.09 Nm	
Travel diagrams		page 238 - group 1		page 238 - group 1		page 238 - group 1		page 238 - group 3	

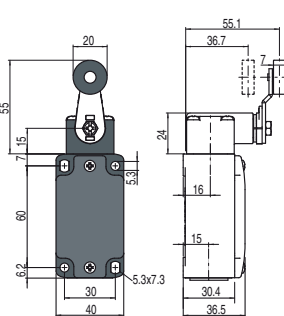
With external rubber gasket



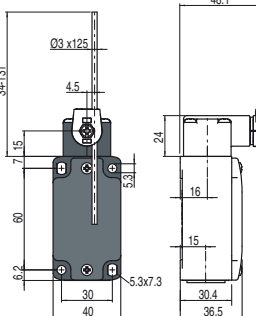
With external rubber gasket



Other rollers available. See on page 28



Round rod, Ø 3 mm, stainless steel



Contact blocks

5	R	FD 521-M2	1NO+1NC	FD 525-M2	1NO+1NC	FD 531-M2	➔ 1NO+1NC	FD 532-M2	1NO+1NC
6	L					FD 631-M2	➔ 1NO+1NC	FD 632-M2	1NO+1NC
7	LO					FD 731-M2	➔ 1NO+1NC	FD 732-M2	1NO+1NC
9	L					FD 931-M2	➔ 2NC	FD 932-M2	2NC
10	L	FD 1021-M2	2NO	FD 1025-M2	2NO	FD 1031-M2	2NO	FD 1032-M2	2NO
11	R					FD 1131-M2	➔ 2NC	FD 1132-M2	2NC
12	R					FD 1231-M2	2NO	FD 1232-M2	2NO
13	LV					FD 1331-M2	➔ 2NC	FD 1332-M2	2NC
14	LS					FD 1431-M2	➔ 2NC	FD 1432-M2	2NC
15	LS					FD 1531-M2	2NO	FD 1532-M2	2NO
16	LI					FD 1631-M2	➔ 2NC	FD 1632-M2	2NC
18	LA	FD 1821-M2	1NO+1NC	FD 1825-M2	1NO+1NC	FD 1831-M2	➔ 1NO+1NC	FD 1832-M2	1NO+1NC
20	L	FD 2021-M2	1NO+2NC	FD 2025-M2	1NO+2NC	FD 2031-M2	➔ 1NO+2NC	FD 2032-M2	1NO+2NC
21	L	FD 2121-M2	3NC	FD 2125-M2	3NC	FD 2131-M2	➔ 3NC	FD 2132-M2	3NC
22	L	FD 2221-M2	2NO+1NC	FD 2225-M2	2NO+1NC	FD 2231-M2	➔ 2NO+1NC	FD 2232-M2	2NO+1NC
2	R	FD 221-M2	2x(1NO-1NC)	FD 225-M2	2x(1NO-1NC)	FD 231-M2	2x(1NO-1NC)	FD 232-M2	2x(1NO-1NC)
E1	A	FD E121-M2	1NO-1NC	FD E125-M2	1NO-1NC	FD E131-M2	1NO-1NC	FD E132-M2	1NO-1NC
Max. speed		1 m/s		1 m/s		page 237 - type 1		1.5 m/s	
Min. force		0.08 Nm		0.14 Nm		0.1 Nm (0.25 Nm ➔)		0.1 Nm	
Travel diagrams		page 238 - group 3		page 238 - group 3		page 238 - group 4		page 238 - group 4	

All measures in the drawings are in mm

Items with code on **green** background are stock items

Accessories See page 225